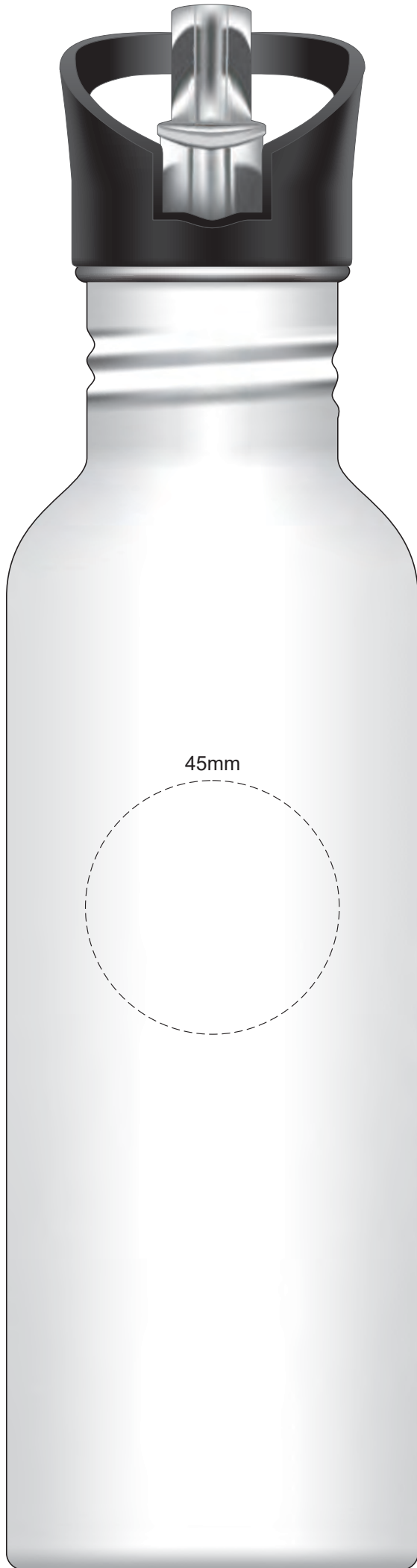
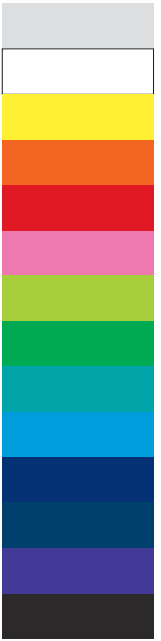
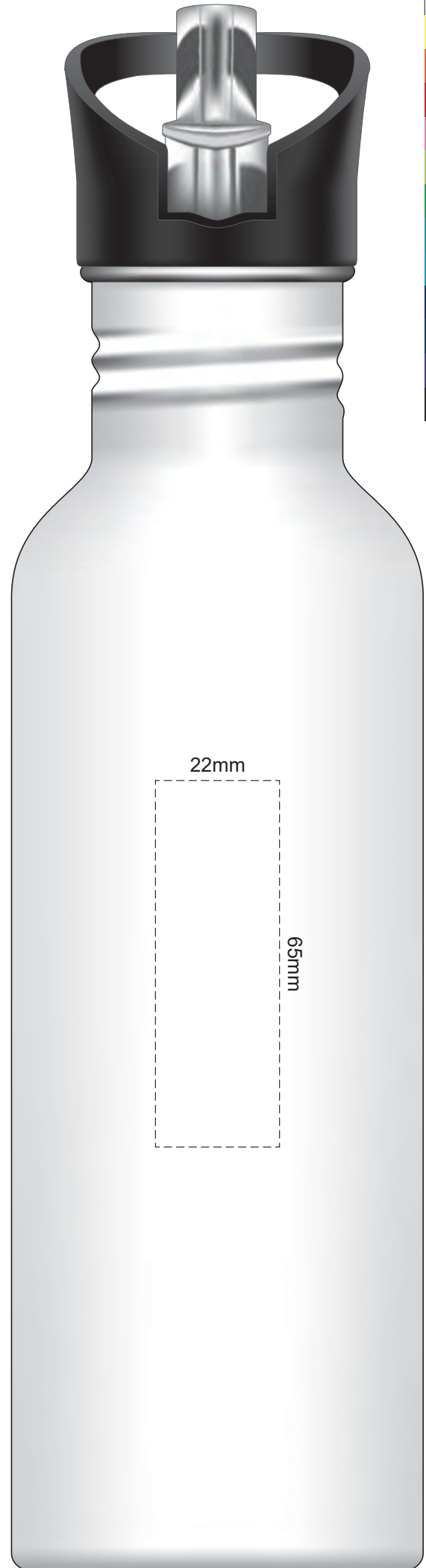


100% of Actual Size  
Pad Print



100% of Actual Size  
Pad Print



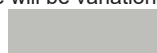


Red Line = Exact opposites of the product  
(centre artwork to the red line)

**Please note:** As the printing process is done with the removal of the lid,  
exact alignment to the lid can't be guaranteed,  
and there will be variations in logo positioning between items



Branding area can be moved **anywhere within the red line**.  
**Please note:** As the printing process is done with the removal of the lid, exact alignment to the lid can't be guaranteed, and there will be variations in logo positioning between items



Stainless Engraves to a Natural Etch



Colours Engraves to a Shiny Steel Finish



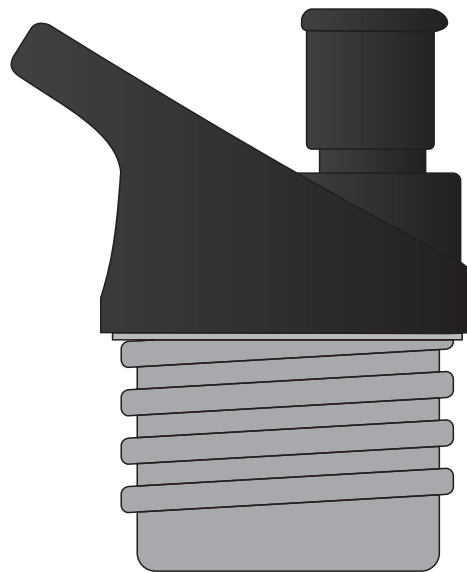
70% of Actual Size  
Rotary Digital  
(Gloss Finish)



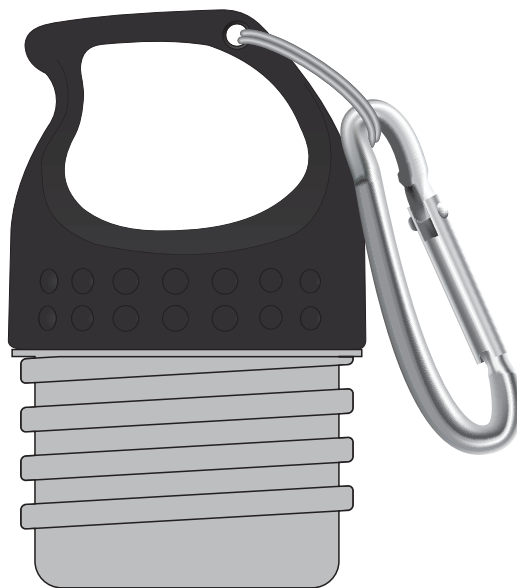
Red Line = Exact opposites of the product  
(centre artwork to the red line)

Please note: As the printing process is done with the removal of the lid,  
exact alignment to the lid can't be guaranteed,  
and there will be variations in logo positioning between items

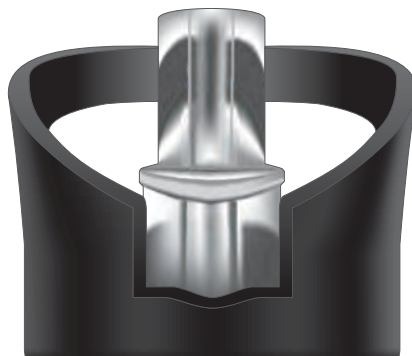
**SIPPER LID**



**CARABINER LID**

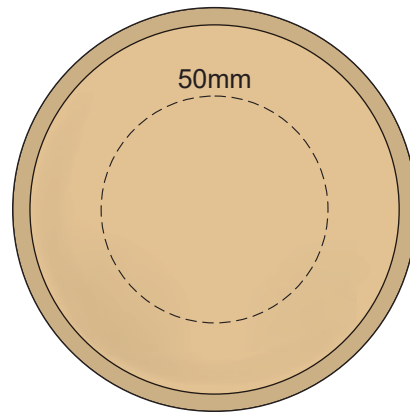
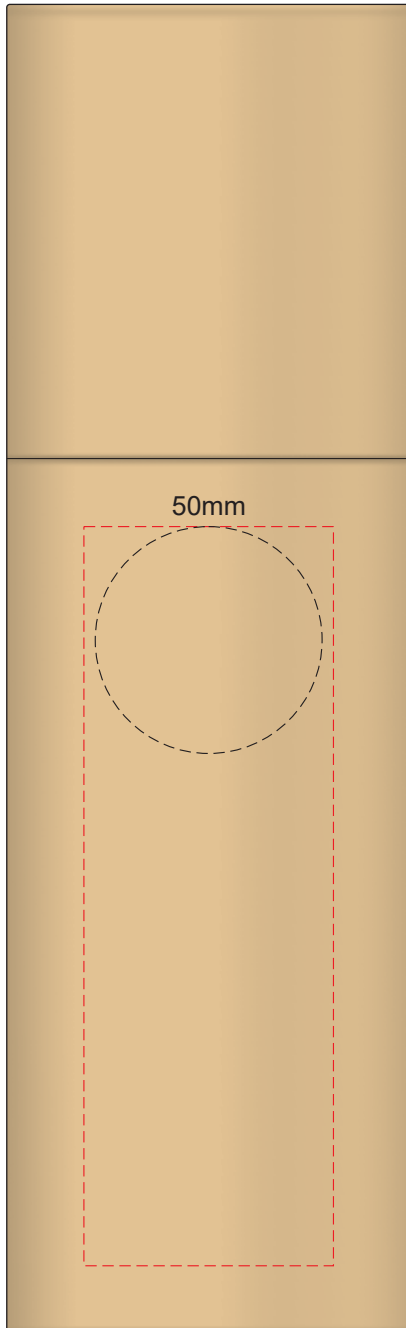


**FLIP VALVE LID**





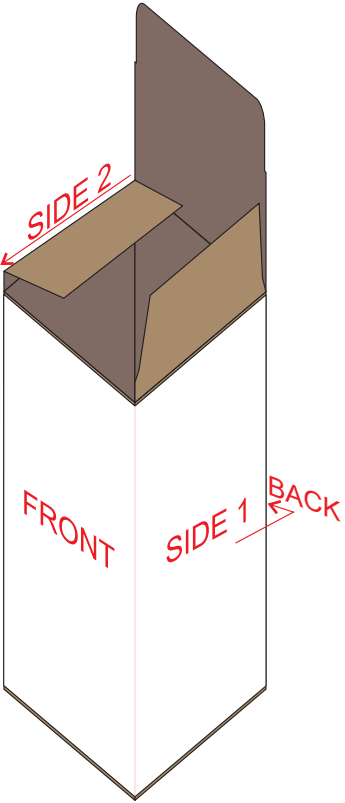
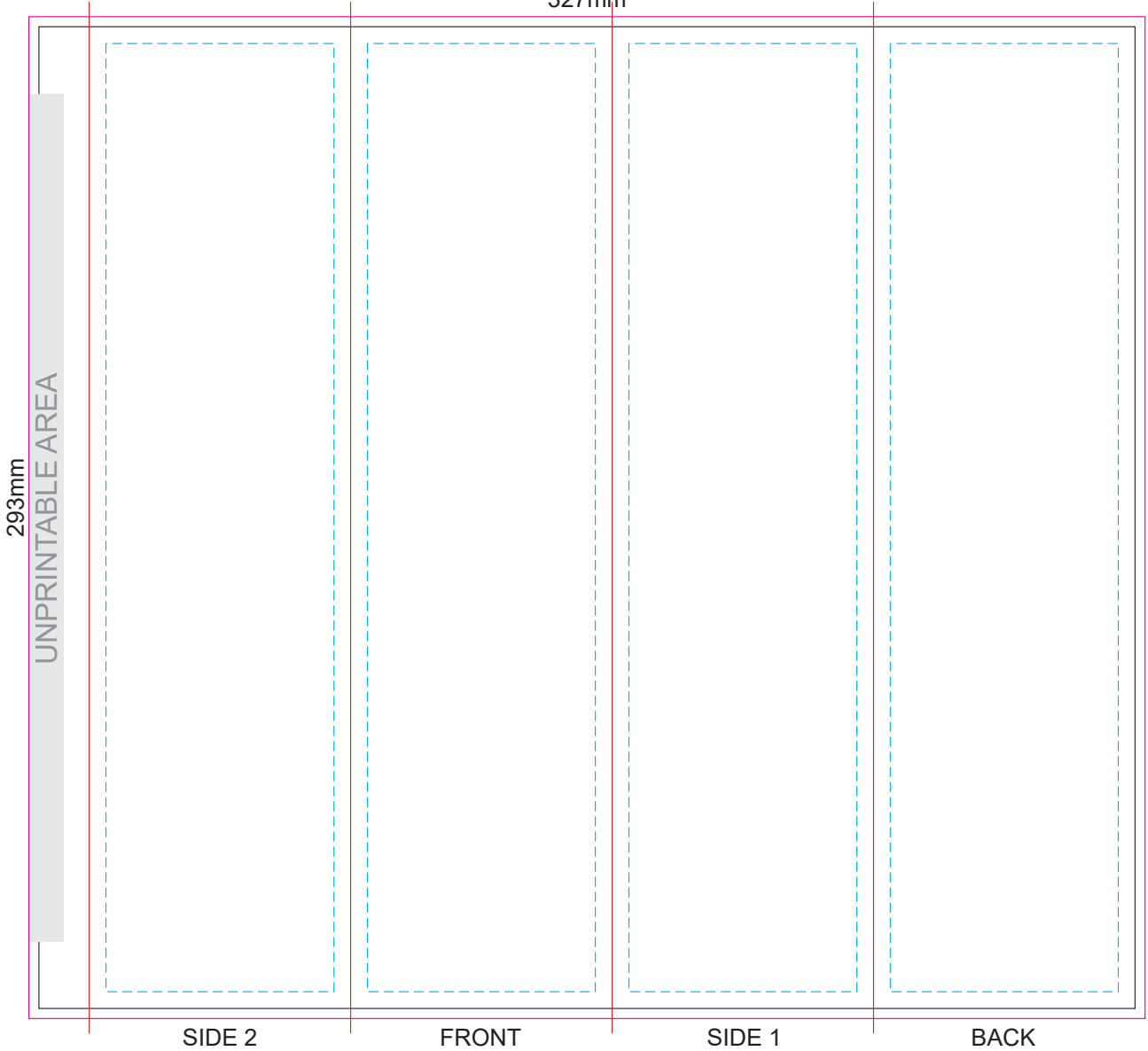
60% of Actual Size  
Pad Print (one colour)



Branding area can be moved anywhere within the red line.

**GIFT BOX SLEEVE**

50% of Actual Size  
Digital Print  
327mm



Blue Line = The SIGNIFICANT PRINT AREA  
(Keep all critical images & text within this box)  
Black Line = Maximum print area  
Pink Line = Bleed off to here  
Red Line = Fold Line